

Fire Evacuation Routes

ElliTe Studios, Penny Appeal Campus, Thornes Park, Wakefield, WF2 8QZ



Front door main entrance (capacity 200 persons)

Studio 2 back door (capacity 200 persons)

Fire door at other end of corridor (capacity 100 persons)

Via caretaker's cupboard by stairs (capacity as few as possible, only to be used in absolute emergency)

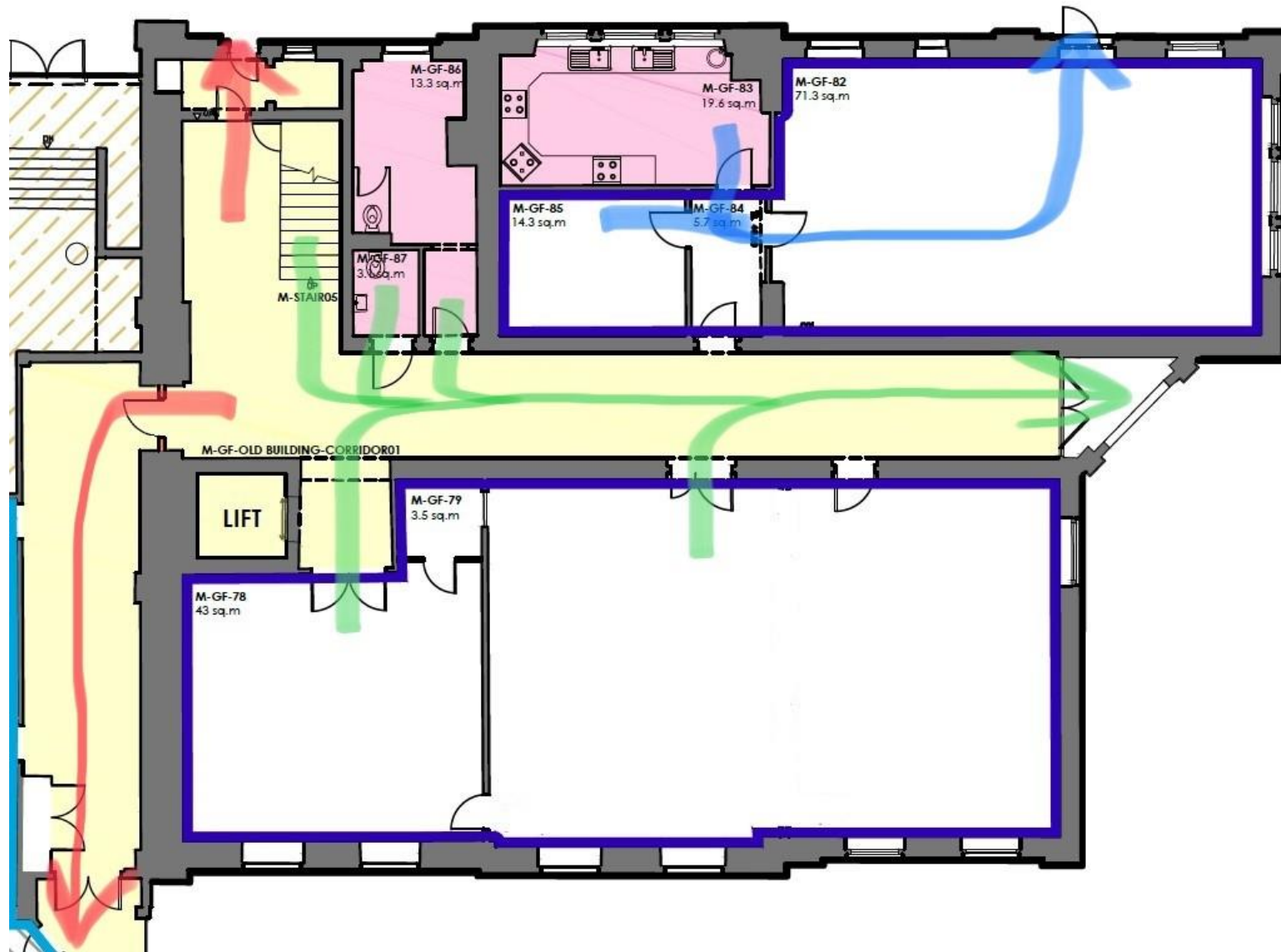
From	Main route (route 1)	Route 2 (if route 1 blocked/unsafe)	Route 3 (if route 1, 2 blocked/unsafe)	Route 4 (if route 1, 2, 3 blocked/unsafe)
GF - Studio 1	Front door main entrance	Studio 2 (back door)	Fire door at end of corridor	Via caretaker's cupboard by stairs
GF - Studio 2	Studio 2 (back door)	Front door main entrance	Fire door at end of corridor	Via caretaker's cupboard by stairs
GF - Girls Changing room	Studio 2 (back door)	Front door main entrance	Fire door at end of corridor	Via caretaker's cupboard by stairs
GF - Kitchen	Studio 2 (back door)	Front door main entrance	Fire door at end of corridor	Via caretaker's cupboard by stairs
GF - Corridor	Front door main entrance	Fire door at end of corridor	Studio 2 (back door)	Via caretaker's cupboard by stairs
GF - Boys Changing room and disabled toilet	Front door main entrance	Fire door at end of corridor	Studio 2 (back door)	Via caretaker's cupboard by stairs
FF – Wardrobe, toilet block, studios 3, 4, 5, office	Stairwell then front door main entrance	Fire door at end of corridor	Studio 2 (back door)	Via caretaker's cupboard by stairs

Maximum distance of travel to escape route – 20 m

Ground Floor Evacuation Routes

Green and Blue = Main routes (routes 1 & 2)

Red = Alternate routes (routes 3 & 4)



First Floor Evacuation Routes

Green = Main route, then join green route on ground floor

